

# ROCKY MOUNTAIN MS CENTER

*— the answers begin here —*



## 2015 ANNUAL REPORT

MISSION | IMPACT | FINANCES

# MISSION

## BOARD OF DIRECTORS

### OFFICERS

Brett Hanselman  
*Chair*

Robert Shanahan  
*Vice Chair*

Michael Persichitte  
*Treasurer*

Del Arnold  
*Development Chair*

Jennifer Mayes  
*Secretary*

### MEMBERS AT LARGE

Jerry Buck  
Brad Cillian  
Kimberly Eilber  
David Geonetta  
Diane Kathol  
Jennifer Nelson  
Louise Richardson  
James Tarpey  
Casey Tynan

### HONORARY MEMBERS

H. Lee Ambrose  
Liz Frawley  
A. Barry Hirschfeld  
Kevin & Mary McNicholas  
Cindy Medema  
Charles A. Miller  
Larry Olsen  
Steve Roesinger  
W. Dean Singleton  
Sandra Walling  
Marie Windlinger  
Adam H. Writer  
Diane Writer

### CEO

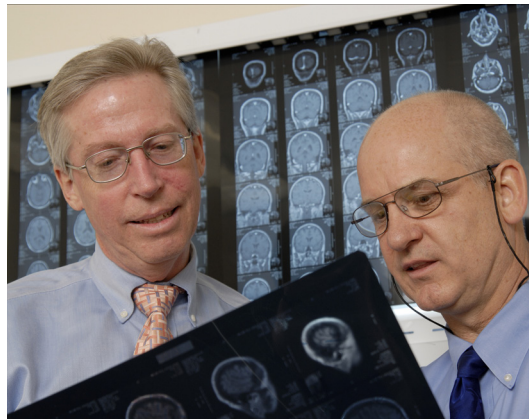
Gina Berg

### MEDICAL DIRECTOR

Timothy Vollmer, MD

The mission of the Rocky Mountain MS Center is to improve the quality of life of individuals and their families living with MS and related neurological diseases through **care, support, education** and **research**.

Patients, caregivers, supporters, volunteers and medical professionals are all vital parts of the RMMSC community, making this organization an invaluable resource for those whose lives are touched by MS.



## CARE

*"If it wasn't for the Rocky Mountain MS Center, it would have been a lot harder to get my diagnosis. MS is complicated. I found that there's little awareness about how to identify it."*

*— Sarah, MS patient*

Our physicians and medical staff have built a Center of Excellence, as endorsed by the national Consortium of MS Centers. We estimate that we now care for more than half of the individuals in Colorado living with MS, as well as many more who travel to the RMMSC at CU from surrounding states.

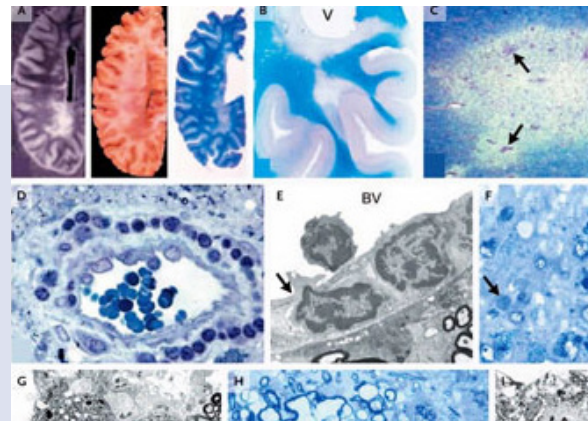
*"Every day I wake up and I look forward to coming to KADEP. I get to do things I normally would not be able to, like hydrotherapy, boxing and camping."*

*— Ryan, KADEP client*

The King Adult Day Enrichment Program (KADEP) is a nationally-renowned model of care for adults with MS, brain injury and other acquired neurological conditions.

# *Our focus is maximizing lifelong brain health through a comprehensive model of care.*

**Care, Support, Education and Research** come together at the Rocky Mountain MS Center to provide patients with the tools they need to live active, healthy and productive lives with multiple sclerosis.



## **SUPPORT**

*“Pat Daily was a great help to our entire family when we learned of my son’s illness. She dealt with the situation on a completely factual basis with no ‘sugar coating,’ but at the same time showed a deft understanding of what a newly diagnosed patient might be thinking.”*

*—Mark, father of patient*

Led by MS counseling and education expert Pat Daily, RMMSC offers counseling and support services to clients and their families. Each year Tom Stewart, attorney and registered PA, helps more than 350 people with MS navigate the process of applying for Social Security Disability Insurance.

## **EDUCATION**

*“I just wanted to thank you for your class Monday night. You definitely made it interesting and took away the ‘doom and gloom’ of a possible diagnosis. My mother and I walked away feeling better about my current situation.”*

*— Sean, MS 101 attendee*

We bring the latest in MS research and treatment to our community through various education programs, including MS 101, Conversations on MS, and our semi-annual Education Summits. We broaden our reach with online webinars, e-newsletters and *InforMS*, our quarterly magazine with a national circulation.

## **RESEARCH**

*“Although MS is treatable, it is not yet curable. The RMMSC research program is focused on three goals: first, identifying the best treatment strategy for each patient to maximize lifelong brain health; second, researching current therapies; and third, pursuing an MS vaccine approach with the goal of curing MS and preventing MS in those at high risk.”*

*— Dr. Timothy Vollmer,  
RMMSC Medical Director*

MS represents the largest single research area in the University of Colorado’s Department of Neurology, with around 30 trials and programs underway at any given time.

# MEASURING YOUR IMPACT

The **Rocky Mountain MS Center** is an independent nonprofit organization providing invaluable resources for the community we serve, including direct patient care, support services, educational programs, and cutting edge research.

We are committed to providing innovative, specialized, comprehensive and interdisciplinary care to treat, support and rehabilitate people living with MS. We provide services that support individuals and families wherever they are on their MS journey.

**Your support allows us to deliver on that commitment. Our impact is your impact.**

---

## OUR BUDGET

Nearly half of the RMMSC's \$2.5 million annual budget is made up of contributions from generous donors like you.

**\$580,682**

in contributions from individuals.

**\$268,150**

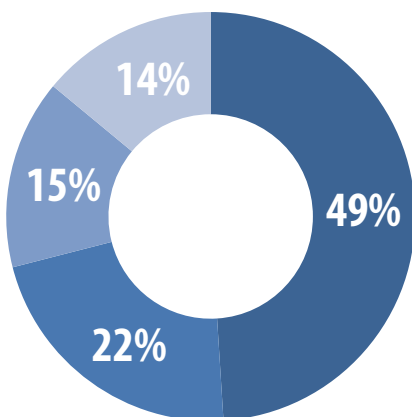
in contributions from foundations.

**\$267,290**

from fundraising events.

---

## WHERE YOUR GIFT GOES



- Care.** The largest portion of the RMMSC's budget goes directly to care for our patients and clients at RMMSC @ CU and the King Adult Day Enrichment Program (KADEP).
- Clinical Research.** Next is our research program at RMMSC @ CU, where multiple sclerosis is currently the largest single area of focus in neurology research.
- Education Programs.** Our next largest investment goes to community education, including classes, seminars, and a quarterly magazine.
- Support Services.** Finally, we invest in various support services for patients and families, including hydrotherapy, counseling, referrals, and legal assistance in our disability law clinic.

---

***100% of donations remain local, supporting research and services in our community.***



*"Our support of the Rocky Mountain MS Center is helping build a true center of excellence, a model to be emulated by others." — Mark S., Patient and Donor*

---



## Care

Our physicians and medical staff have built a Center of Excellence, as endorsed by the Consortium of MS Centers. We estimate that we now care for more than half of the individuals in Colorado living with MS, as well as many more who travel to the RMMSC at CU from surrounding states. The King Adult Day Enrichment Program (KADEP) is now serving an average of more than 60 clients every day. KADEP is a nationally-known model of care for adults with MS, brain injury and other acquired neurological conditions.

### Examples of Care Costs

- \$130** Per-client cost of a KADEP Adventure Recreation outing
  - \$75** Daily cost for a client to attend KADEP
- 

## Support Services

Led by MS counseling and education expert Pat Daily, RMMSC offers counseling and support services to clients and their families. Each year Tom Stewart, attorney and registered Physician Assistant, helps more than 350 people with MS navigate the process of applying for Social Security Disability Insurance. Our support services also encompass our Hydrotherapy program, a water-based wellness program held at pools around the Denver metro area.

### Examples of Support Service Costs

- \$250** Average cost to support completion of an SSDI claim
  - \$300** Pays for two complimentary counseling sessions
- 



## Education Programs

We bring the latest in MS research and treatment to our community through various education programs, including MS 101, Conversations on MS, and our semi-annual Education Summits which are now livestreamed around the world. We broaden our reach with online webinars, e-newsletters and InforMS, our quarterly magazine with a national circulation.

### Examples of Education Program Costs

- \$7,500** Printing and mailing costs of a single issue of InforMS Magazine
  - \$2,000** Typical cost to host Conversations on MS for 30 people
- 



## Clinical Research

MS represents the largest single research area in the University of Colorado's Department of Neurology, with around 30 trials and programs underway at any given time. Your contributions to the RMMSC fund the studies and trials that are helping change the way the world treats MS. Our research department also houses the RMMSC Tissue Bank and Biorepository.

### Examples of Clinical Research Costs

- \$25,000** Typical RMMSC investment in an individual research project
  - \$900** Average cost to process and store donated tissue
- 



**We are dedicated to being a responsible steward of your charitable gifts and ensuring your investment has real, valuable impact on our mission.**

# FINANCES

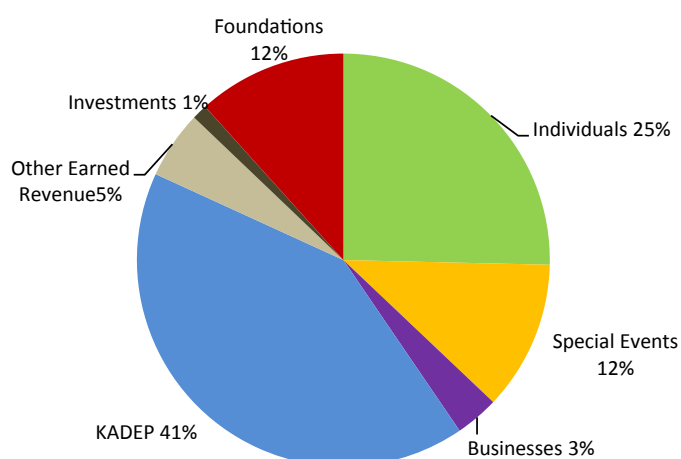
The Rocky Mountain MS Center is a 501(c)(3) Charitable Organization, Federal ID number 84-0795455. We have been rated a Four Star Charity by Charity Navigator and a Gold Participant by GuideStar Exchange, independent charity evaluation agencies. Each designation is the highest the agencies award.



We are committed to making sure your support goes where it's needed most -- that's why we work diligently to keep our administrative costs low, and commit to you that 100% of the funds we raise support programs and services right here in Colorado.

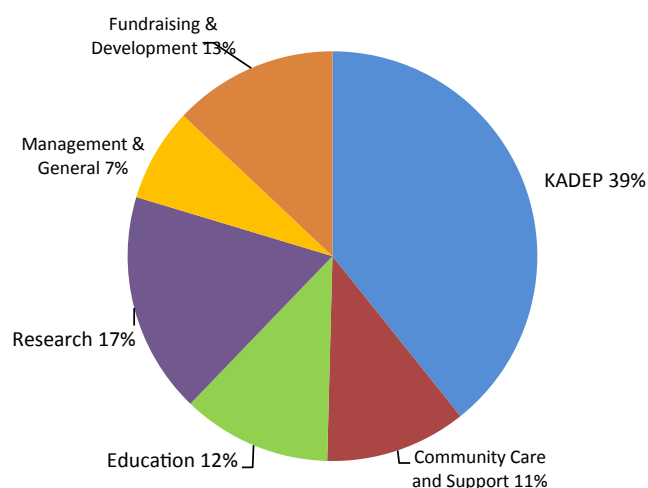
## Support and Revenue

Individuals	580,682	25%
Foundations	268,150	12%
Businesses	78,000	3%
KADEP	946,676	41%
Other Earned Revenues	121,355	5%
Investments	27,318	1%
Special Events, Net	267,290	12%
<b>Total</b>	<b>2,289,471</b>	<b>100%</b>



## Expenses

KADEP	1,019,424	39%
Community Care and Support	289,396	11%
Education	305,931	12%
Research	453,401	17%
Management & General	191,274	7%
Fundraising & Development	336,865	13%
<b>Total</b>	<b>2,596,291</b>	<b>100%</b>



Source: 2015 Financial Statements.

## A Note About Rocky Mountain MS Center Financial Statements

In 2015, we began the transition from a calendar-based fiscal year to a more traditional July to June fiscal year, to better reflect the annual business cycles of the many companies and organizations we work closely with. This transition included an abbreviated fiscal year period beginning in January 2016 and concluding in June 2016. As a result, the next published Annual Report for the Rocky Mountain MS Center will include the new 2016-17 fiscal year (July 2016 through June 2017). Financial statements will be available for the 18-month period from January 2015 through June 2016.

ROCKY MOUNTAIN  
MS CENTER  
*— the answers begin here —*

**Rocky Mountain MS Center**

8845 Wagner Street  
Westminster, CO 80031  
[www.mscenter.org](http://www.mscenter.org)