

ROCKY MOUNTAIN MS CENTER

— the answers begin here —



2018-19 ANNUAL REPORT

MISSION | IMPACT | FINANCES

MISSION

BOARD OF DIRECTORS

OFFICERS

Del Arnold
Chair

Michael Persichitte
Vice Chair

David Geonetta
Treasurer

Kimberly Eilber
Development Chair

Louise Richardson
Secretary

MEMBERS AT LARGE

Brad Cillian
Diane Kathol
Jennifer Nelson
Robert Shanahan
Erica Tarpey
Casey Tynan

HONORARY MEMBERS

H. Lee Ambrose
A. Barry Hirschfeld
Kevin & Mary McNicholas
Cindy Medema
Charles A. Miller
Larry Olsen
Steve Roesinger
W. Dean Singleton
Sandra Walling
Marie Windlinger
Adam H. Writer
Diane Writer

CHIEF EXECUTIVE OFFICER

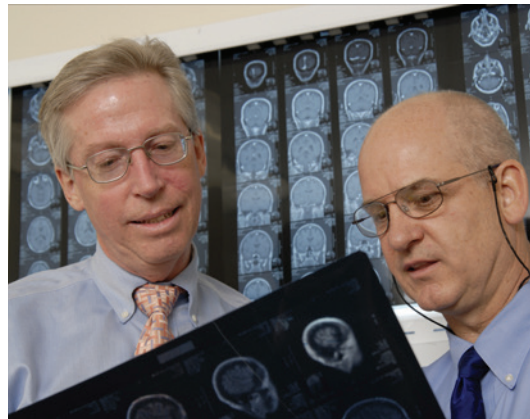
Gina Hensrud

MEDICAL DIRECTOR

Timothy Vollmer, MD

The mission of the Rocky Mountain MS Center is to improve the quality of life of individuals and their families living with MS and related neurological diseases through **care, support, education** and **research**.

Patients, caregivers, supporters, volunteers and medical professionals are all vital parts of the RMMSC community, making this organization an invaluable resource for those whose lives are touched by MS.



CARE

“If it wasn’t for the Rocky Mountain MS Center, it would have been a lot harder to get my diagnosis. MS is complicated. I found that there’s little awareness about how to identify it.”

— Sarah, MS patient

Our physicians and medical staff have built a Center of Excellence, as endorsed by the national Consortium of MS Centers. We estimate that we now care for more than half of the individuals in Colorado living with MS, as well as many more who travel to the RMMSC at CU from surrounding states.

“My head and heart are at rest because when Zach goes to KADEP, I know you guys will take care of him. I don’t have to rush to save him because he’s already saved.”

— Barbara, mother of a KADEP client

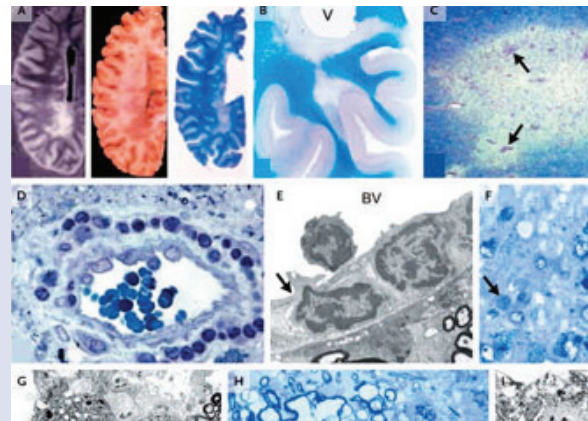
“Every day I wake up and I look forward to coming to KADEP. I get to do things I normally would not be able to, like hydrotherapy, boxing and camping.”

— Ryan, KADEP client

The King Adult Day Enrichment Program (KADEP) is a nationally-renowned model of care for adults with MS, brain injury and other acquired neurological conditions.

Our focus is maximizing lifelong brain health through a comprehensive model of care.

Care, Support, Education and Research come together at the Rocky Mountain MS Center to provide patients with the tools they need to live active, healthy and productive lives with multiple sclerosis.



SUPPORT

“The RMMSC’s counselor was a great help to our entire family when we learned of my son’s illness. She dealt with the situation on a completely factual basis with no ‘sugar coating,’ but at the same time showed a deft understanding of what a newly diagnosed patient might be thinking.”

—Mark, father of patient

The RMMSC offers counseling and support services to clients and their families, including initial consultations and referrals for ongoing care. Our legal services include helping people with MS navigate the process of applying for Social Security Disability Insurance.

EDUCATION

“It was shortly after I was diagnosed that I stumbled across the MS 101 class. Although I had done a lot of research on my own and didn’t expect to learn anything... I learned more in that class than in all my reading and research. Suddenly I had real knowledge and hope.”

*— Elizabeth,
RMMSC Patient*

We bring the latest in MS research and treatment to our community through various education programs, including MS 101, Conversations on MS, and our semi-annual Education Summits. We broaden our reach with online webinars, e-newsletters and our quarterly magazine, InforMS.

RESEARCH

“Although MS is treatable, it is not yet curable. The RMMSC research program is focused on identifying the best treatment strategy for each patient to maximize lifelong brain health, and researching how current therapies give us insights into the biological basis of MS that will lead to the next generation of therapies.”

*— Dr. Timothy Vollmer,
RMMSC Medical Director*

MS represents the largest single research area in the University of Colorado’s Department of Neurology, with around 30 trials and programs underway at any given time.

IMPACT

The **Rocky Mountain MS Center** is an independent nonprofit organization providing invaluable resources for the community we serve, including direct patient care, support services, educational programs, and cutting edge research.

We are committed to providing innovative, specialized, comprehensive and interdisciplinary care to treat, support and rehabilitate people living with MS. We provide services that support individuals and families wherever they are on their MS journey.

Your support allows us to deliver on that commitment. Our impact is your impact.

THANK YOU, DONORS!

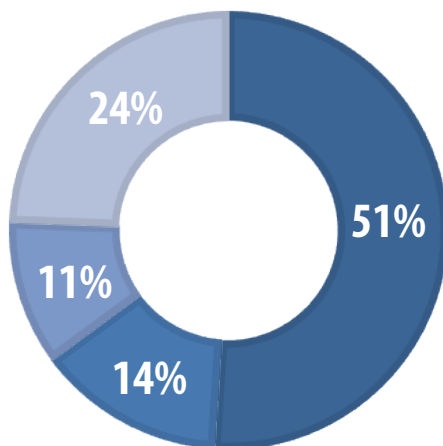
Roughly 45 percent of the RMMSC's \$2.5 million annual budget is made up of direct contributions from generous donors like you. Your support is a vital part of ensuring that we can continue our mission. Together, we are changing lives in our community every day.

In the 2016-17 fiscal year, you were responsible for:

\$1,983,512

in contributions from individuals, businesses and charitable foundations.

WHERE YOUR GIFT GOES



- Care.** The largest portion of the RMMSC's budget goes directly to care for our patients and clients at RMMSC @ CU and the King Adult Day Enrichment Program (KADEP).
- Clinical Research.** Next is our research program at RMMSC @ CU, where multiple sclerosis is currently the largest single area of focus in neurology research.
- Education Programs.** Our next largest investment goes to community education, including classes, seminars, and a quarterly magazine.
- Support Services.** Finally, we invest in various support services for patients and families, including hydrotherapy, counseling, referrals, and legal assistance in our disability law clinic.

100% of donations remain local, supporting research and services in our community.

“Our support of the Rocky Mountain MS Center is helping build a true center of excellence, a model to be emulated by others.” — Mark S., Patient and Donor



Care

Our physicians and medical staff have built a Center of Excellence, as endorsed by the Consortium of MS Centers. We estimate that we now care for more than half of the individuals in Colorado living with MS, as well as many more who travel to the RMMSC at CU from surrounding states. The King Adult Day Enrichment Program (KADEP) is now serving an average of more than 60 clients every day. KADEP is a nationally-known model of care for adults with MS, brain injury and other acquired neurological conditions.

Examples of Care Costs

- \$130** Per-client cost of a KADEP Adventure Recreation outing
 - \$75** Daily cost for a client to attend KADEP
-

Support Services

Led by MS counseling and education expert Pat Daily, RMMSC offers counseling and support services to clients and their families. Each year Tom Stewart, attorney and registered Physician Assistant, helps more than 350 people with MS navigate the process of applying for Social Security Disability Insurance. Our support services also encompass our Hydrotherapy program, a water-based wellness program held at pools around the Denver metro area.

Examples of Support Service Costs

- \$250** Average cost to support completion of an SSDI claim
- \$300** Pays for two complimentary counseling sessions



Education Programs

We bring the latest in MS research and treatment to our community through various education programs, including MS 101, Conversations on MS, and our semi-annual Education Summits which are now livestreamed around the world. We broaden our reach with online webinars, e-newsletters and InforMS, our quarterly magazine with a national circulation.

Examples of Education Program Costs

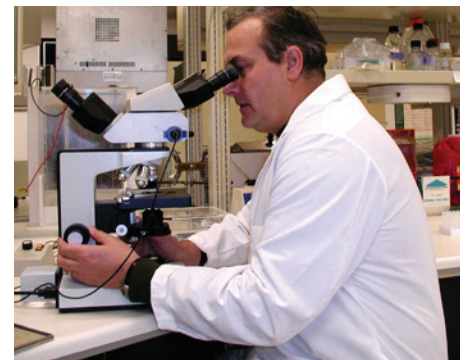
- \$7,500** Printing and mailing costs of a single issue of InforMS Magazine
 - \$2,000** Typical cost to host Conversations on MS for 30 people
-

Clinical Research

MS represents the largest single research area in the University of Colorado's Department of Neurology, with around 30 trials and programs underway at any given time. Your contributions to the RMMSC fund the studies and trials that are helping change the way the world treats MS. Our research department also houses the RMMSC Tissue Bank and Biorepository.

Examples of Clinical Research Costs

- \$25,000** Typical RMMSC investment in an individual research project
- \$900** Average cost to process and store donated tissue



We are dedicated to being a responsible steward of your charitable gifts and ensuring your investment has real, valuable impact on our mission.

FINANCES

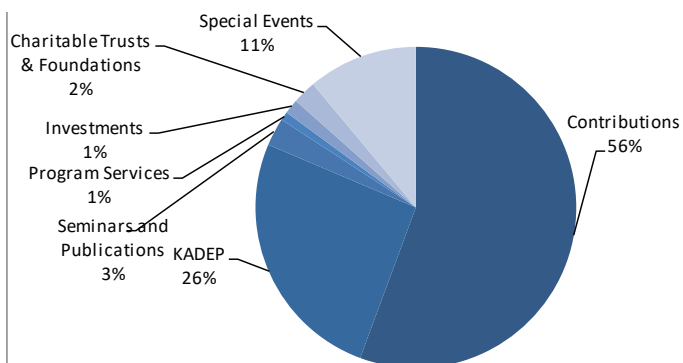
The Rocky Mountain MS Center is a 501(c)(3) Charitable Organization, Federal ID number 84-0795455. We have been rated a Gold Participant by GuideStar Exchange, an independent charity evaluation agencies. Each designation is the highest the agencies award.



We are committed to making sure your support goes where it's needed most -- that's why we work diligently to monitor expenses and remain committed to you that 100% of the funds we raise support programs and services right here in Colorado.

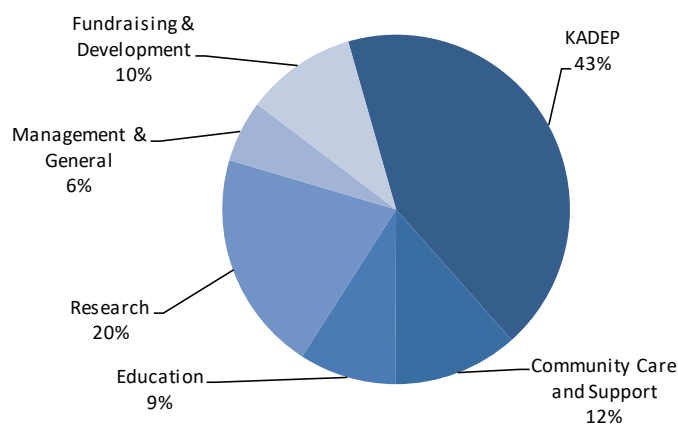
SUPPORT & REVENUE

Contributions	\$1,983,512	56%
KADEP	\$917,418	26%
Seminars & Publications	\$100,310	3%
Program Services	\$30,873	1%
Investments	\$52,536	1%
Charitable Trusts & Foundations	\$84,614	2%
Special Events (net)	\$395,009	11%
Total	\$3,564,272	100%



EXPENSES

KADEP	\$1,233,686	43%
Community Care and Support	\$335,387	12%
Education	\$259,212	9%
Research	\$589,007	20%
Management & General	\$164,746	6%
Fundraising & Development	\$295,805	10%
Total	\$2,877,843	100%



ROCKY MOUNTAIN
MS CENTER
— the answers begin here —

Rocky Mountain MS Center

8845 Wagner Street
Westminster, CO 80031
www.mscenter.org